

Quick Start Guide: IC My Cloud

[This Quick Start Guide applies to IC Realtime/ Clearview DVR/
NVR/ IP Cameras with a mid-2014 or newer firmware.]



Remote View Setup:

You will need to have either P2P Connection or port forward the **HTTP, TCP and RTSP** Ports of the DVR/ NVR/ IP Camera. If port forwarding multiple devices on the network, keep in mind you will want different port numbers for each device and port forward accordingly.

For **P2P Connection** setup see: http://www.icrealtime.com/docs/quickstart/QSG_P2P.pdf

For more information regarding Remote View via **Port Forwarding**, see:

[Quick Start Guide: Networking, Port Forwarding, and DDNS Guide](#)

Verify your port forwarding rules by opening a www.canyouseeme.org on a web browser. From there, you input the ports you forwarded and click **Check Port**.

Adding Remote Devices to IC My Cloud:

Using **Internet Explorer**, go to icmycloud.com. If you have not already done so, Click on **Sign Up** to register for an **IC My Cloud Account** and verify via E-Mail.

Once you have registered an IC My Cloud account, Click on **Login** and login with **your IC My Cloud** Credentials. The login page is shown in **Fig.1-1**.

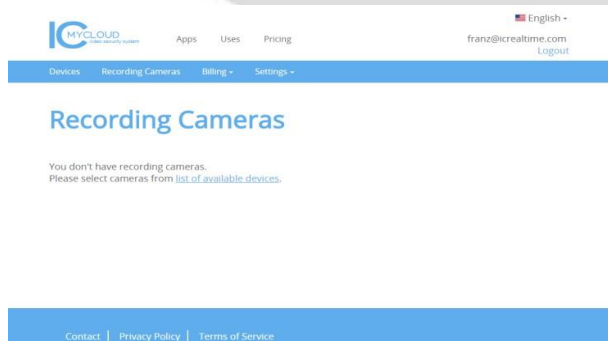


Fig.1-1

Once logged in, click on **List of Available Devices**. From the **Devices** page, click on **Add Device**. (See **Fig 1-2**)

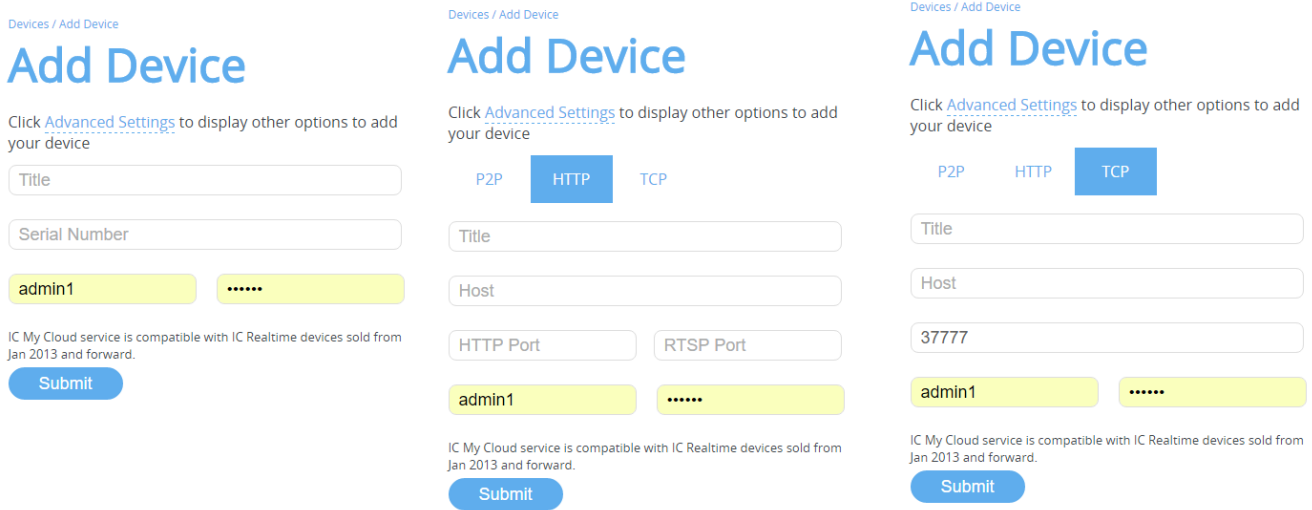


Fig.1-2

You can choose P2P, HTTP or TCP depending on the device connection type:

Title: The title for your device, for your identification

Serial Number: Input the device serial number if P2P has been enabled on the device.

Host: External IP address/ DDNS

HTTP/ RTSP Port: HTTP and RTSP ports of the device forwarded

Username: Username for device

Password: Password for Device

If your device has been successfully connected, you will see it on the **Devices** section. (See **Fig.1-3.**)



Fig.1-3

Click on The **Camera name** you wish to set a recording plan on. You will be able to see a camera preview. Click on **Subscribe** to select that camera to record. (See **Fig 1-4**)



Fig.1-4

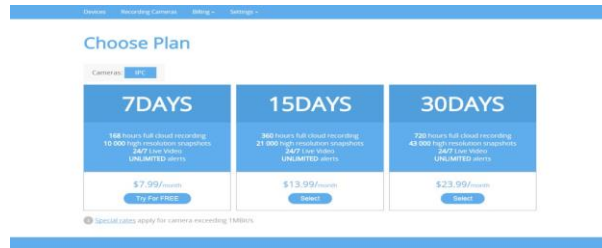


Fig.1-5

After selecting a camera to subscribe, you will be prompted to select a plan. After selecting a plan, you will be prompted to input payment information. After doing so, your cameras should start recording to **IC MY Cloud**. You can verify by going to the **Devices** section and under the **Cameras/ Recording** should now say **1/1**.

LiveView/ Playback:

Log in to your account in icmycloud.com. You will see the cameras you have connected here. *Select the Channel/ Camera you want to view. See (Fig.2-1).*

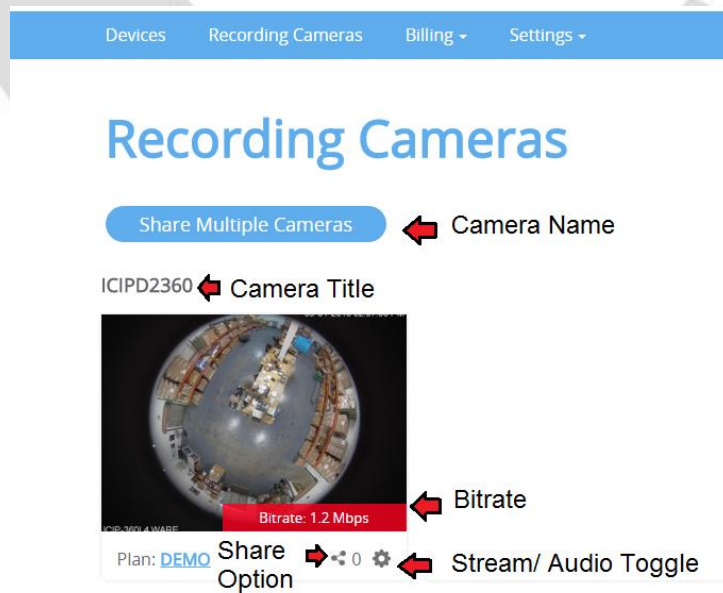


Fig.2-1

You can navigate to different times using the progress bar to view playback as well as choose day/week/month view options for the progress bar. (Fig.2-2)

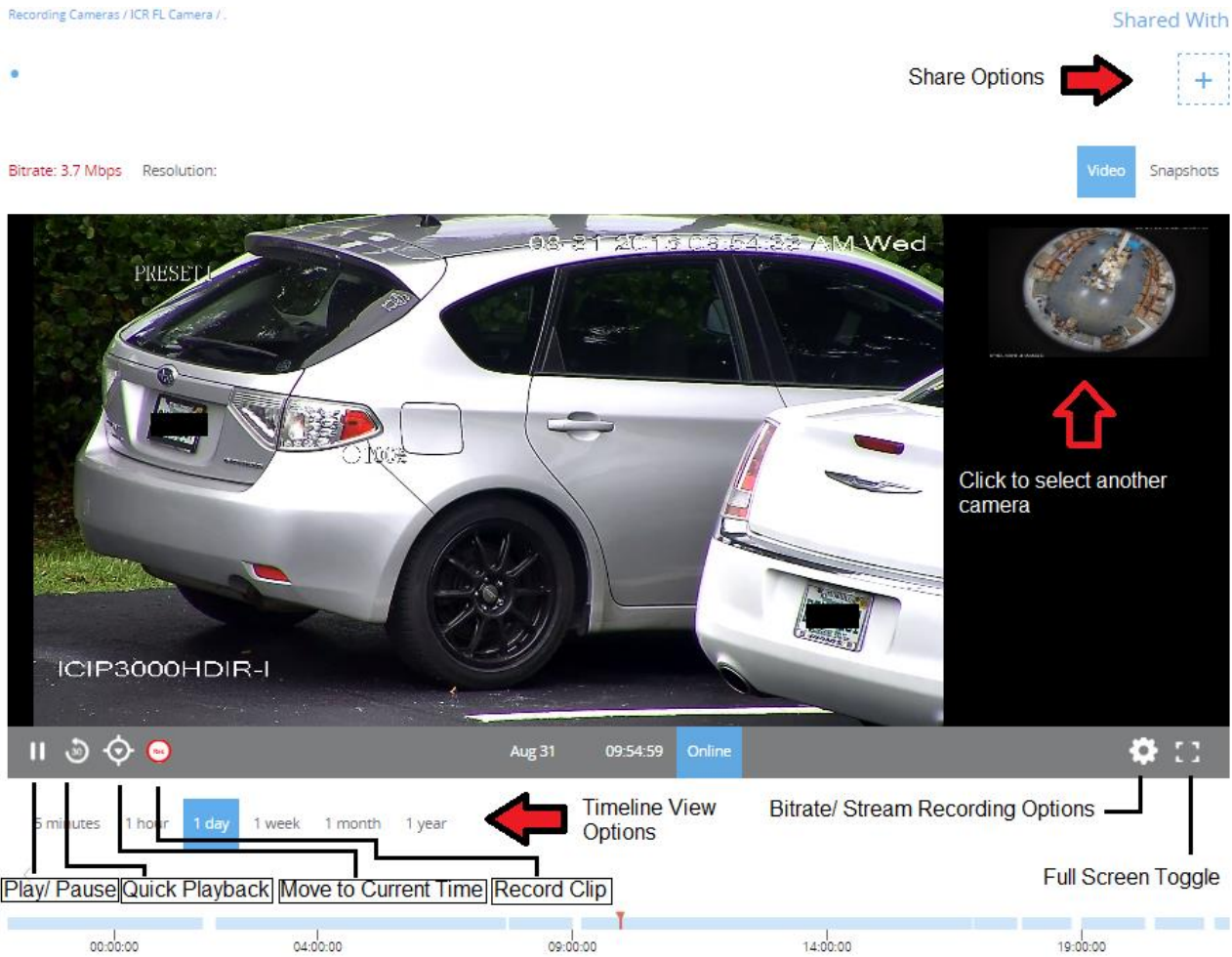


Fig.2-2

Changing Record Streams: Click the Gear wheel on the bottom right of a camera. You can then choose different stream options as well as audio recording.

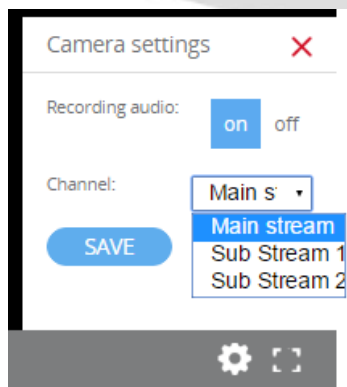


Fig. 3-1

Playing Back Recorded Clips:

Selecting any of the Recorded footage files under "Clips" will play that recording. (Fig.3-2)



Fig.3-2

You can delete or download a recorded footage as well. (Fig. 3-3)



Fig.3-3

Sharing Camera Views:

To Share camera views, go to Recording Cameras Section and click on “Share Multiple Cameras” or Click the Share icon. (See Fig. 4-1)

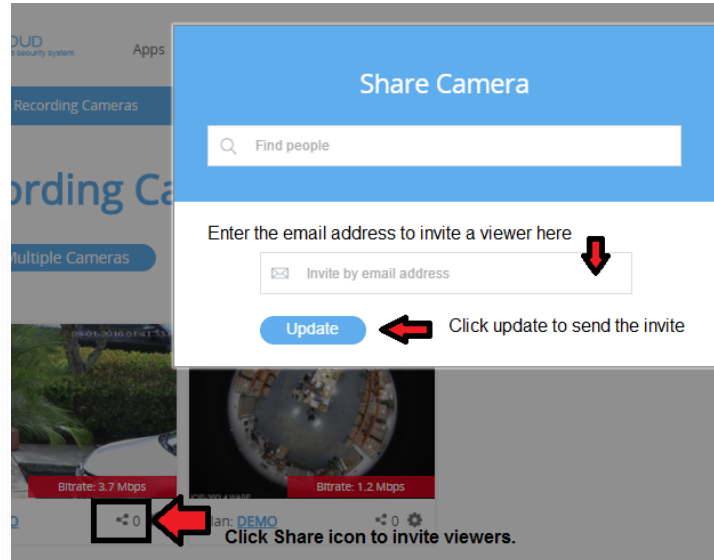


Fig.4-1

From there, select the cameras you wish to share using the checkboxes below them. From there, click “Share Selected.” You can then input an e-mail to invite a viewer. (Fig 4-2)

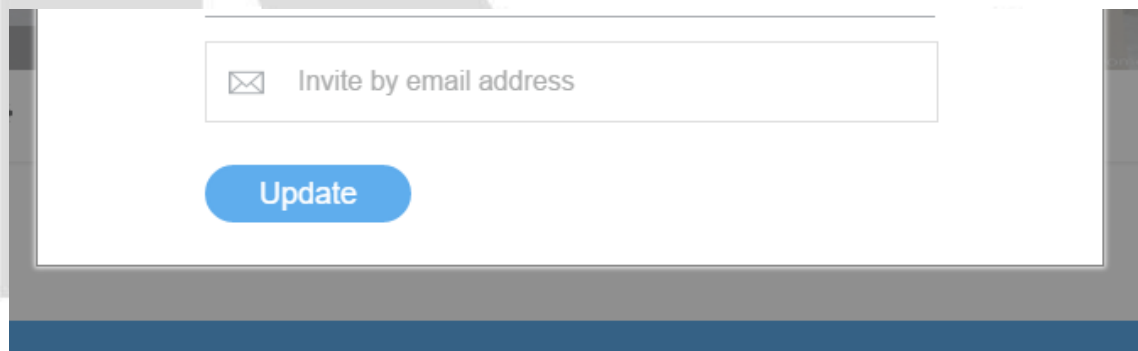


Fig. 4-2

Notes:

- *The Free Trial allows for one camera and you will need to input payment information.*
- *If the bit rate on a recording device is **over 1 Mbps**, you will be charged a premium fee, configure the DVR/ NVR/ IP Camera **Encode Settings** accordingly.*
- *Only IC Realtime Devices on a mid-2014 or newer firmware will work.*